

SOUTH EAST MIDLANDS

WHERE INNOVATION FUELS GROWTH

STRATEGIC ECONOMIC PLAN -
SUMMARY

SEMLEP

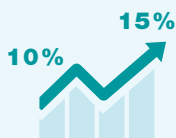
South East Midlands
Local Enterprise Partnership



No.1 LEP area for innovation

% firms engaged in products/service innovation

8%
Jobs increase
2010-2015



Business birth rate

from 2010 to 2015
business survival rate 2% points higher than England average

20%
Increase in enterprises
2010-2015

79% HEIs

contract research income from large business

2.5 times the share for England as a whole



Goods Exports
2010-2015

£6bn

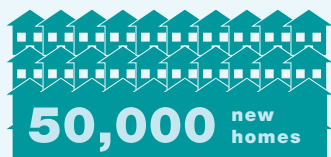


£265m

Local Growth Fund invested in high impact projects to grow business, people and places

49.5%

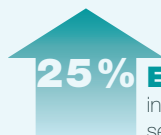
Of students studying in local higher education find employment in the area. **10% points higher** than neighbouring areas



50,000 new homes

in 2010-2015

over 6% of England's total



25%

Employment Growth

in High Performance Technology sector businesses (2009-2014)



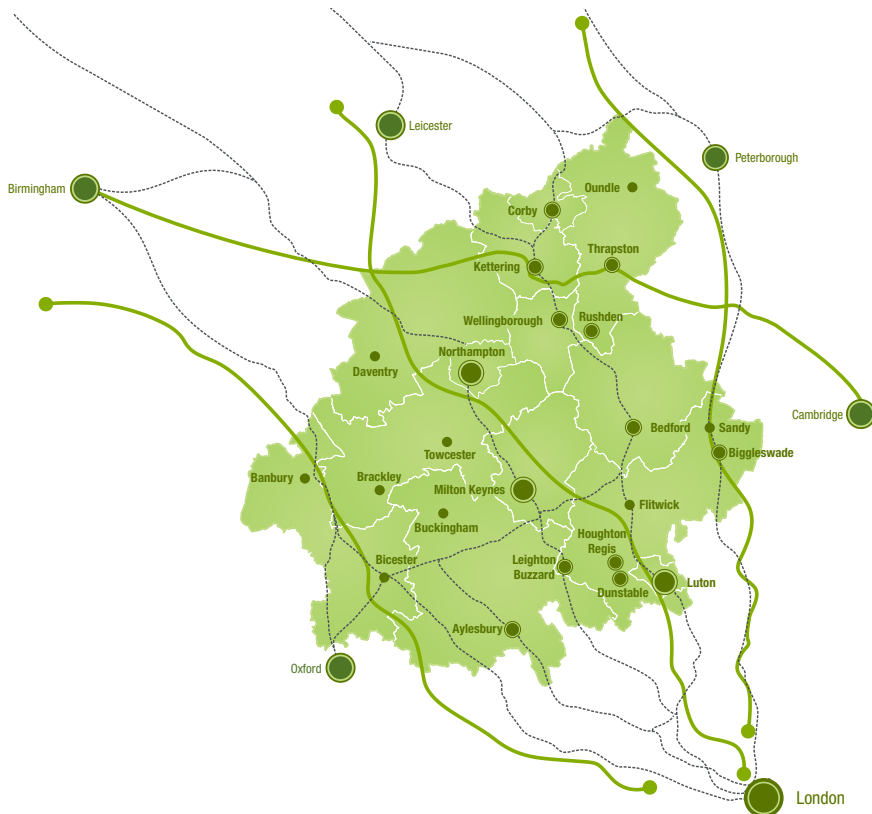
Growth Hubs

helped more than **5,000** business to grow and **700** to start-up



14,500 to 16,850

an increase in the number of **apprenticeships** over 2 years



The South East Midlands

The South East Midlands is a high growth, £50bn economy that occupies a key strategic position at the nexus of Oxford, Cambridge, London and Birmingham.

The area makes a major contribution to the growth and development of England's economy. The South East Midlands has:

- » A population of c.2m people, projected to increase to 2.4m by 2039.
- » Over 80,000 PAYE and VAT-registered businesses, and the highest innovation ranking in the country.
- » Delivered over 6% of the country's homes, relative to 3.6% of its population.

Why we are refreshing the Strategic Economic Plan?

We are in the midst of a period of substantial change, politically, economically and in terms of a technological revolution that is rapidly re-shaping the way we live, work and do business. With the recent merger between SEMLEP and Northamptonshire LEP, now is the right time to review success, consider challenges and focus on opportunities. For us to continue to deliver the growth and prosperity we have seen in recent years, our priority is to create conditions for stronger, sustainable and productivity-led growth, with our strengths in innovation at the forefront.

Development of the Cambridge-Milton Keynes-Oxford Growth Corridor has the potential to transform this area of England into a hub of knowledge-intensive industry that can compete on the world stage. Our position at the core of this Corridor, our ability to deliver growth, our high concentration of business and innovation assets and

expertise, alongside our proven track record in turning innovation into business activity, positions us as being integral to achieving the vision for the Corridor as “the UK’s Silicon Valley – a world renowned centre for science, technology and innovation.”

What the Strategic Economic Plan does

The South East Midlands’ Strategic Economic Plan sets out strategic investments and future actions needed to grow our economy to its full potential for the future prosperity of all of our communities.

It details seven priorities to create the right conditions for growth, set out across three core themes: growing business, growing people and growing places.

Pursuing these priorities will achieve our mission:

» The South East Midlands will build on its reputation as a premier location for growth, innovation, creativity and world-leading technologies, which will result in a doubling of the area’s GVA by 2050 «

SEVEN PRIORITIES

SEMLEP, in partnership with organisations from across the public, private and education sectors will work in collaboration to achieve our priorities:



GROWING BUSINESS

1. To use our strengths in High-Performance Technology, including Next Generation Transport, to deliver commercialisation of innovation, driving growth within the Cambridge-Milton Keynes-Oxford Growth Corridor.
2. To deliver increased levels of private sector investment, including Foreign Direct Investment into the area, and grow jobs by 10% by 2025.
3. To deliver greater trading activity between companies in our area and elsewhere, with a special emphasis on emerging global markets, but also working to retain good European links.



GROWING PLACES

5. To deliver sufficient new homes – with 130,000 planned in the decade to 2025/26 – to meet the needs of our growing population, with an emphasis on accelerating the completion of units with planning consent.
6. To deliver the infrastructure needed to achieve our full growth potential, including East-West Rail and the Expressway, and much-improved Broadband and wireless connections.



GROWING PEOPLE

4. To deliver an integrated and employer-led approach to skills attainment to ensure that our population is aware of, and has the attributes and competencies required for, a modern, competitive economy.

This will comprise all pathways including delivery of 170,000 apprenticeships in the decade to 2025/26 and opportunities for up-skilling, re-skilling and re-engagement.



CROSS-CUTTING

7. To ensure that this growth is undertaken in a manner that promotes social inclusion, equality and environmental sustainability.



Growing business: What SEMLEP will deliver:



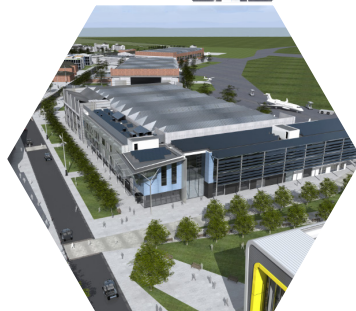
- » **Build on the area's 'showcase sector' strengths** – in High Performance Technology, Manufacturing & Advanced Technology, Logistics and the Creative & Cultural sector – by working with showcase sector groups and partners to produce and deliver sector-specific growth plans, as part of a Local Industrial Strategy.
- » **Promote the South East Midlands to prospective investors**, including by working in partnership with local authorities, developers and commercial agents to match prospective businesses with appropriate employment land.
- » **Support local business through the uncertainty of the Brexit period by promoting the merits of exporting**, encouraging businesses to explore new markets, and working to generate a talent pipeline of people with the skills that employers require.
- » **Deploy Growth Hubs to identify gaps in business, innovation and trade support** and deliver services to meet local business needs, with a specific role to assist scale-up businesses to achieve sustained growth through tailored support and access to finance.
- » **Strengthen links between business and government**, and access funding from the latter where relevant, to build on the area's impressive innovation and growth record, and assist in adaptation to greater automation.
- » **Support delivery of Local Growth Fund projects** to: progress innovation in the High Performance Technology sector; strengthen the South East Midlands' cultural and creative offering; and put in place appropriate employment land and transport infrastructure.

Growing people: What SEMLEP will deliver:



- » Against the backdrop of the South East Midlands' rapidly-growing and innovative high-tech economy, current skills gaps and Brexit uncertainties, **work through skills sector forums and employer engagement to determine required skills needs**, attainment provision and capacity requirements, both now and in the future.
- » **Disseminate Labour Market Information** and signpost and facilitate effective employer engagement with educators.
- » **Support school and college staff to embed employer-driven core skills and competencies into the curriculum**, promoting awareness and showcasing activity that inspires and raises aspirations towards careers in showcase and other high growth sectors.
- » **Ensure signposting of provision and pathways for continuous personal development**, up-skilling, re-skilling and development of leadership skills. This will support both individuals and also the local economy's resilience to technological and demographic change.
- » **Strengthen social inclusion and labour market engagement** through the implementation of the 2017-20 ESIF programme, and by engaging with government and local partners on the design of the future UK Shared Prosperity Fund.
- » **Support delivery** of Local Growth Fund capital investment projects to increase skills capacity and provision.

Growing places: What SEMLEP will deliver:



- » Progress recommendations of the National Infrastructure Commission by working with partners to **strengthen cross-Growth Corridor governance, catalyse the further development of East-West links**, and enable associated housing and infrastructure development.
- » Work with local partners and through England's Economic Heartland to address transport co-ordination issues and **improve local connectivity**, including First Mile Last Mile issues.
- » Work with local authorities, government and other partners **to accelerate the completion of homes** with planning consent through resolution of local housing infrastructure issues, particularly with regards to the upfront funding of large-scale developments.
- » **Develop an Energy Strategy** to help address current energy capacity issues and also set out options for meeting the area's future energy needs, which will take account of innovative technologies and opportunities for reducing the carbon footprint of the area.
- » Through joint working with local authorities and business, **improve digital and mobile infrastructure**, support the commercial rollout of new technologies, and encourage business take-up of these facilities.
- » Support delivery of Local Growth Fund projects to **improve transport infrastructure and unlock housing and employment land**, as well as seeking funding for, and supporting the implementation of, other strategic projects identified as critical to long-term growth.

Cross-Cutting Themes:

What SEMLEP will deliver:



- » **Promote social inclusion** through our Growing People Skills Strategy, implementation of the 2017-20 ESIF programme, and engagement on the design of the UK Shared Prosperity Fund.
- » **Support rural business** through improvements to local broadband and transport connections, support with increasing exports, facilitation of EAFRD projects, and engagement with government on future sources of rural funding.
- » Mitigate environmental stress from a step change in growth **by facilitating projects that promote energy and resource efficiency in businesses**, and supporting the development of a Natural Capital Investment Plan for the Cambridge-Milton Keynes-Oxford Growth Corridor.
- » To deliver against our strategic objectives, we will need to **work together across the public, private and education sectors**, using our capital investments, programmes and collective influence.
- » SEMLEP will work with partners to develop **an implementation plan to detail key actions and performance targets**.

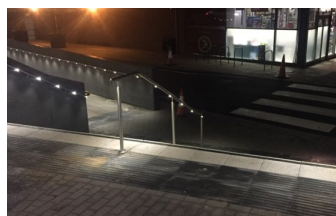
Investment programme

SEMLEP has secured £265m of Local Growth Fund from Government to support a portfolio of projects that unlock the growth potential of the area, and increase jobs, learner numbers, employment floorspace or homes. The projects are listed below, with full project details available on the SEMLEP website.

| Project name and delivery partner | Growth Fund awarded |
|--|---------------------|
| A45 – Daventry Development Link, Northamptonshire County Council | £14m |
| A43 – Phase 1b Northampton to Kettering Improvements, Northamptonshire County Council | £7.9M |
| A43 – Phase 2 - Northampton to Kettering improvements, Northamptonshire County Council | £6.5m |
| Stanton Cross, Bovis Homes | £9m |
| Wootton Hall Access Improvements, Northamptonshire County Council | £1.7m |
| Bedford Western Bypass, Bedford Borough Council | £2.5m |
| Smarter Routes to Employment, Central Bedfordshire Council | £0.8m |
| Daventry Campus, Northampton College | £6.5m |
| Engineering and Construction Skills Leighton Buzzard, Central Bedfordshire College | £2.5m |
| Growing Bletchley Station, Milton Keynes Council | £1.5m |



Engineering and Construction Skills
-Central Bedfordshire College



Bletchley Station – access and safety improvements



Academic Centre, University of Buckingham



MK Gallery expansion visualisation.
Image courtesy of 6a architects

| Project name and delivery partner | Growth Fund awarded |
|--|---------------------|
| Woodside Link, Central Bedfordshire Council | £20m |
| St James Mill Road, Northampton Borough Council | £0.6m |
| Luton Highway Access, Luton Borough Council | £1.2m |
| A421 dualling, Central Bedfordshire Council | £23.5m |
| Luton Surface Access, Luton Borough Council | £20m |
| Moulton College Food and Drink Innovation Centre, Moulton College | £3.5m |
| Smart Commuting, Northamptonshire County Council | £3.5m |
| Smart Corridors, Northamptonshire County Council | £3.5m |
| Multi-User Environment for Autonomous Vehicle Innovation, Cranfield University | £3m |
| Engineering and Construction Skills Centre, Bedford College | £2.5m |
| I-Worx. Bedford Borough Council | £2.5m |
| The Exchange, Aylesbury Vale District Council | £3.3m |
| MK Gallery Expansion, MK Gallery | £1.3m |
| Millbrook HGV, Millbrook Proving Ground | £2.6m |
| Vulcan Works, Northampton Borough Council | £6.3m |
| Academic Centre, Milton Keynes Hospital, University of Buckingham | £2m |
| Leyland Trading Estate, Northern Trust Company Limited UK | £1.26m |
| Catesby Aerodynamic Research Facility, Aero Research Partners Ltd | £4.2m |
| Luton Cultural Quarter Creative Cluster, Luton Culture, | £3.96m |
| MAHLE Real Driving Emissions Centre, MAHLE Powertrain, | £2.1m |
| Millbrook Wet Grip, Millbrook Proving Ground, | £3.3m |
| Bedford Town Centre*, Bedford Borough Council | £11m |
| Bedford Southern Gateway*, Bedford Borough Council | £4.5m |
| A509 Wellingborough Dev Link*, Northamptonshire County Council | £15m + £10m |
| Northampton NW Relief Road*, Northamptonshire County Council | £7.93m |
| A6M1 Link Road (2)*, Central Bedfordshire Council | £32.75m |


* Projects subject to due diligence

SEMLEP

South East Midlands
Local Enterprise Partnership

Innovation Centre
Cranfield University Technology Park
University Way
MK43 0BT

t: 01234 436 100
e: info@semlep.com

 [semlep](#)

 [@semlep](#)

www.semlep.com