

NEP and SEMLEP merger formerly completed, welcoming David Bailey, Cllr Heather Smith, Brian Binley and Martin Sutherland to the SEMLEP Board and bringing 9 LGF projects and Northamptonshire Growth Hub under SEMLEP governance. We have said goodbye to Cheryl Smart MBE who resigned in October and we wish Chief Executive, Stephen Catchpole well as he leaves us to retire at the end of this year.

South East Midlands recognised as most innovative LEP area in the country; recently published 2016 ONS figures show we're also fastest growing area in terms of employment.



£59m Local Growth Fund round 3 awarded to SEMLEP. We announced the successful disbursement of £17m to projects for 16/17 financial year. Our total LGF portfolio totals £265m, funding 35 projects.

New 2017 Assurance Framework published – strengthens accountability processes and transparency of decision making.

Six LGF projects completed this year: Central Bedfordshire College's Engineering and Construction Skills Centre; Bletchley Station improvements; Northampton College's Daventry Campus; Woodside Link, joining with the new A5 M1 link and J11a; First phase of Millbrook's HGV innovation space, now fully occupied; and the Control tower for the MUEAVI project opened at Cranfield University, supporting autonomous vehicle testing.

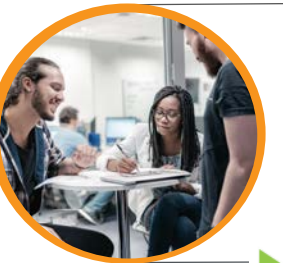


59 FDI, with 1463 new or safeguarded jobs, including £25m investment from 4PX for a new distribution centre in Dunstable, creating 250 new jobs; and £34m investment from Deutsche Post to expand their operations in Banbury, creating 100 new jobs.

Logistics and supply chain summit brings over 100 businesses to John Lewis' Magna Park to talk sector growth.

Sara Homer, Executive Chair Brackmills BID announced as Chair of SEMLEP's Envoys, joined in 2017 by 14 new business members. Visits include Prodrive and Lockheed Martin.

Strategic Economic Plan for 2017 **Where Innovation Fuels Growth** launched to grow business, people and places to achieve the doubling of GVA by 2050. This follows extensive consultation across the area, new data and economic analysis.



Business-driven **Skills Plan: Growing People** launched to deliver an integrated approach to skills and attainment so that our population is aware of, and has the attributes and competencies for our employers and a modern and competitive economy.

South East Midlands Further Education Area-based review completed, with recommendations published August 2017.

Coordinated activity to deliver 53% increase in Apprenticeships in Construction, planning and built environment sector and 38% increase in health, public services and care. 21% increase in apprentices under 19 for engineering and manufacturing sectors (2013-17).



Enterprise Adviser Network successes, bringing on board over 80 advisers and achieving 100% sign-up of mainstream schools in Luton North and South, Milton Keynes North and, North East Bedfordshire constituencies.

SEMLEP appointed Malcolm Johnston as interim Growth Hub Manager to oversee both SEMLEP Growth Hubs.



Growth Hub customer satisfaction scores marked as 'very good or good' 97% Velocity & 94% Northamptonshire Growth Hub.

Velocity's ERDF project already meeting or exceeding 7 of 9 project output targets.

Fourth SEMLEP Business survey conducted with 2370 businesses, to identify economic issues and opportunities and growth confidence levels.

SEMLEP invested £10m ERDF into the Midlands Engine Investment Fund – with 2 funds comprising debt finance and small business loans launched in the Summer.



Annual Velocity Growth Hub event 'Show Me Success' attended by 100 businesses | Northamptonshire Growth Hub hosts 4th Birthday with business celebration event.

New 2017-2020 European Structural Investment Fund Implementation Plan and accompanying data refresh, ESF and ERDF project directories launched.

£31m ESF and £12.5m ERDF 2017/18 calls start with SEMLEP ESF Roadshow of ten local events in train.

European Social Fund Community Consultation Event attended by 80 people.

ESF and ERDF Provider Forums launched to share best practice and promote collaboration.



Looking forward to 2018/19

Review of LEPs by Jake Berry MP, Margot James MP and Andrew Jones MP.

November's National Infrastructure Commission's *Partnering for Prosperity* and Budget 2017 announcements confirm vision for Oxford-Milton Keynes-Cambridge Growth Corridor and commitment to build on successes for the benefit of the whole nation.



Industrial Strategy reaffirms Government's commitment to LEPs and confirms SEMLEP to lead on developing the Local Industrial Strategy for 2019, focusing on clusters of expertise and centres of economic activity.

