



MAKE THE CONNECTION

The South East Midlands:
Innovation, Connectivity, Opportunity

SEMLEP

South East Midlands
Local Enterprise Partnership

A thriving location for innovation, creativity and world-leading technologies



Newlands Park, Luton: development plans

THE SOUTH EAST MIDLANDS IS AT THE HEART OF THE UK'S SCIENCE AND INNOVATION REGION, THE OXFORD-CAMBRIDGE ARC

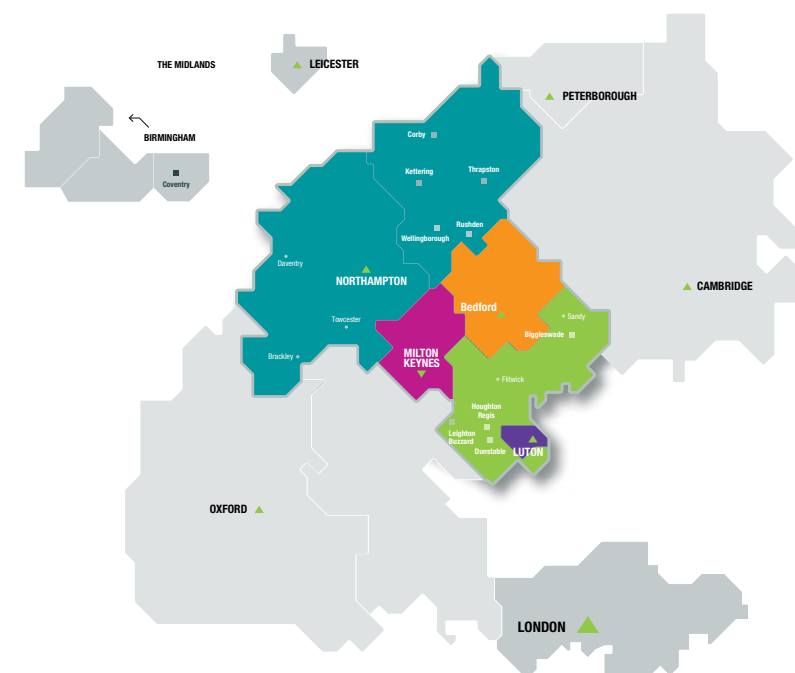
Our rapidly growing £50bn economy and our location at the centre of Oxford, Cambridge, London and Birmingham makes us one of the most exciting economic growth opportunities in the country.

Business has benefited from the area's rich heritage in engineering, motorsport and manufacturing expertise, which has transformed our area to become a test-bed for new technologies with the potential to rapidly scale.

Today, people here are building businesses based on technological innovation that will change the way we live and work. They enjoy the advantages of a connected location, tap into a highly skilled and entrepreneurial community and have a quality of life found rarely elsewhere.

This is where progressive companies come to collaborate, to innovate and to succeed.

Welcome to the South East Midlands.



SEMLEP
South East Midlands
Local Enterprise Partnership


HM Government

£51bn

contributed to national economy annually



Fastest population growth outside London: 22.2% between 2000 and 2020

80%

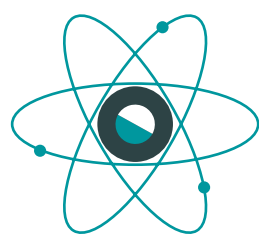
employment rate

£13bn

goods and services exported annually



skilled, adaptable workforce



Innovation

Where ideas become reality

BUSINESSES IN THE SOUTH EAST MIDLANDS ARE AT THE CUTTING-EDGE OF INNOVATION, DRIVING RESEARCH AND FURTHERING EXPERTISE IN CRITICAL SECTORS THAT WILL CHANGE OUR FUTURE.

1 in 5

businesses engaged in product or service innovation

1 in 6

businesses have links with universities or colleges for R&D purposes

Over 25%

of businesses introduced new products, services or processes (12 months to October 2019)



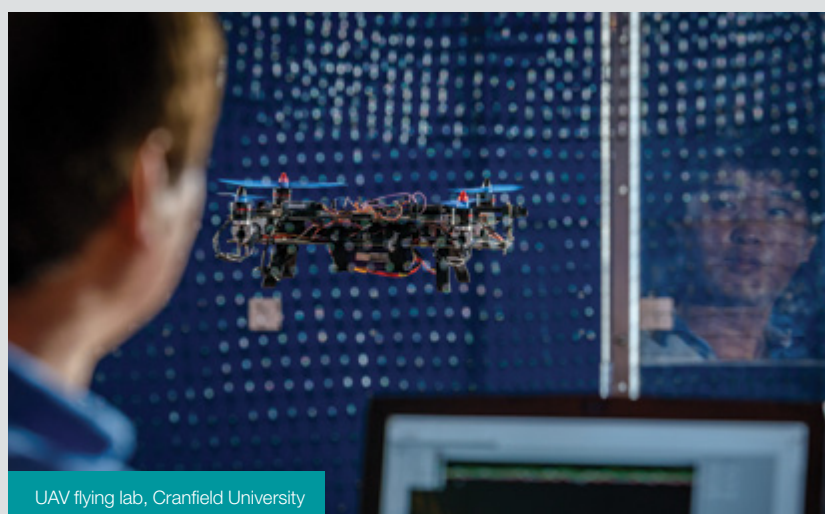
MAHLE Powertrain vehicle development centre, Northampton



Image source: Cranfield University

Advancing technologies to decarbonise civil aviation, Cranfield University is spearheading research and innovation into hydrogen and electrification in aviation.

This is the area where clever ideas and new technologies coalesce into smart business solutions.



UAV flying lab, Cranfield University

Leading in aerospace and automotive testing, advanced manufacturing, logistics, engineering and design, robotics and software development and electronics, the area's businesses and universities are among the most successful in the country at working together to commercialise knowledge and test new technologies in these fields.

The engineering heritage of Silverstone has been instrumental in attracting innovative companies to the area. Silverstone now has over 4,000 companies with advanced engineering, electronics and software skills within a one-hour drive-time radius.

Business expertise and specialist capabilities here lead the UK's future of mobility and clean growth solutions – developing new technologies and technical testing in autonomy, energy efficiency and data capture.

Supporting this, the area also hosts major transport innovators, such as the Silverstone Technology Cluster, the Connected Places Catapult in Milton Keynes, UTAC's vehicle and battery and 5G connectivity testing facilities in Central Bedfordshire, the Catesby Aerodynamic Research Facility in Daventry, the Digital Manufacturing Centre at Silverstone and, Cranfield University's purpose-built experimental facility for the rapid development of 'on and off highway', ground and airborne autonomous solutions, named 'MUEAVI'.

Cranfield University has a global research airport. It is home to the Aerospace Integration Research Centre (AIRC) and has developed the £67m Digital Aviation Research and Technology Centre (DARTeC), which is spearheading the UK's research into digital aviation technology. It is innovating in aircraft

electrification by connecting the university's expertise in the aviation ecosystem with specialist capabilities in clean growth and environmental management. The university boasts the largest logistics and supply chain research centre in Europe and is developing a regional Hub of Excellence to increase productivity and competitiveness through better use data and technologies, such as drones, autonomous vehicles and robots, for 'last-mile-delivery' solutions.

Bedfordshire has a cluster of leading aerospace organisations including the Aircraft Research Association and Bluebear systems.

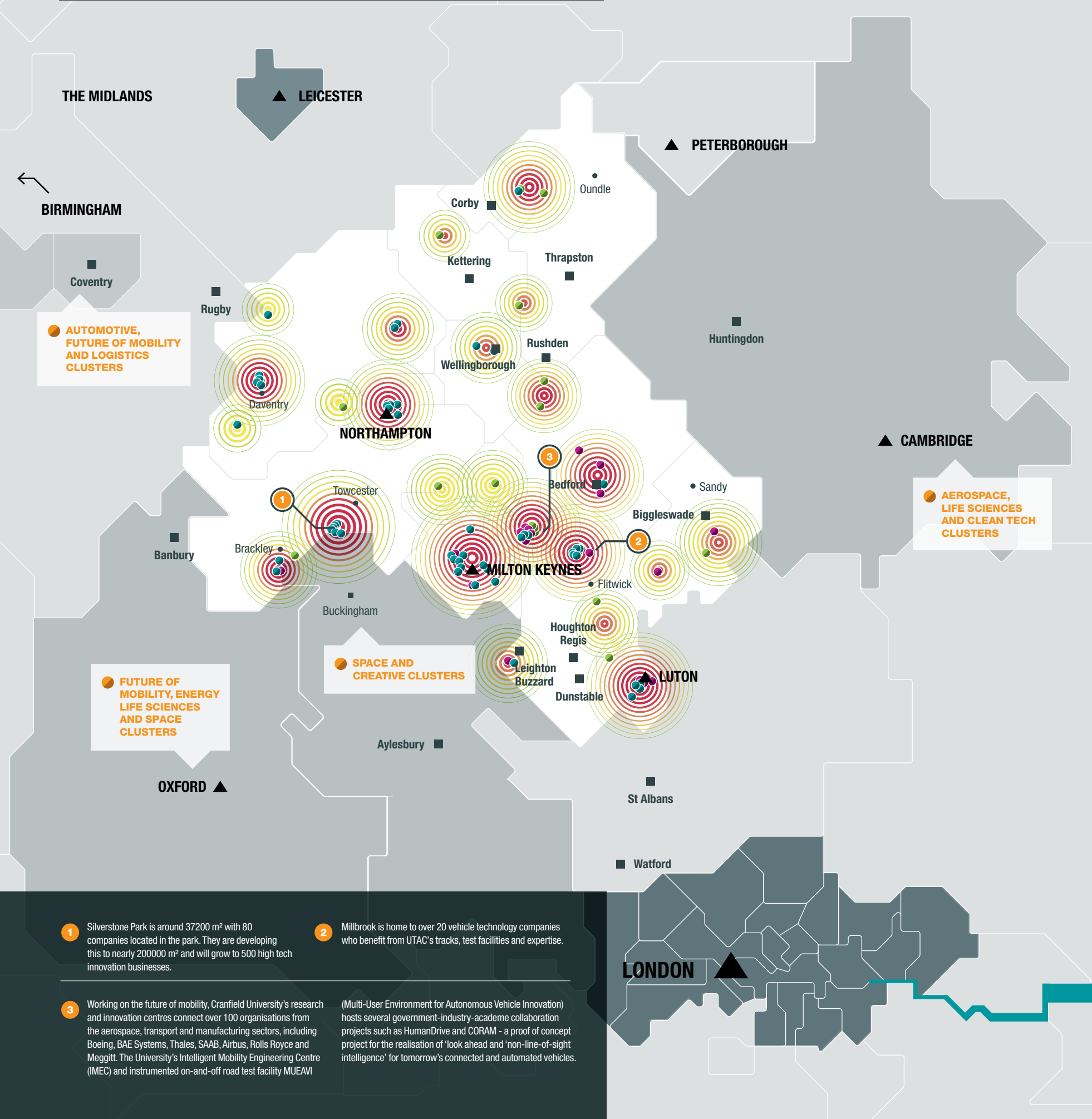
Building on the pioneering work at Bletchley Park during World War II, the area continues to be at the forefront of developments in **artificial intelligence** and **big data**, with particular strengths in application and data analysis.

The Open University and Milton Keynes have played a key role in using big data to pioneer the 'Smart City' movement. They continue to lead in trialling self driving cars, delivery robots and pods and are trialling a new testbed with deployment of dedicated 5G infrastructure to develop new technology.

There are exciting opportunities for business here to create the technologies to go even further, faster and smarter.

The UK's first 5G transport network test tracks, a digital air traffic control centre and vehicle testing centre with climatic and altitude capability have all been developed here.

The South East Midlands



Leading the UK's future of mobility and clean growth.

FUTURE OF MOBILITY

- 1 Aero Tec Laboratories, Milton Keynes
- 2 Alcon Engineering Ltd, Northampton
- 3 BP Pulse, Milton Keynes
- 4 BWT Racing Point F1 Team, Silverstone
- 5 Catesby Aerodynamic Research Facility, Daventry
- 6 Calsonic Kensei, Millbrook
- 7 Connected Places Catapult, Milton Keynes
- 8 Cosworth, Northampton
- 9 Cummins Engine Plant, Daventry
- 10 Delta-Cosworth Motorsport, Silverstone
- 11 EV Experience Centre, Milton Keynes
- 12 FiveAI, Millbrook, Bedfordshire
- 13 Gasrec, CNG Fuels, Northampton
- 14 Honda R&D Europe UK Ltd - Honda Racing, Milton Keynes
- 15 Ilmor Engineering, Brixworth
- 16 Integral Powertrain, Milton Keynes
- 17 Intertek Transportation Technologies, Milton Keynes
- 18 JRM Group, Daventry
- 19 Digital Manufacturing Centre, KWSP, Silverstone
- 20 Lockheed Martin, Bedfordshire
- 21 Luton DART
- 22 Mahle Powertrain, Northampton
- 23 Mercedes AMG Petronas (F1 team), Brackley
- 24 Mercedes Powertrains, Brixworth
- 25 UTAC Proving Ground, Bedfordshire
- 26 Multi-User Environment for Autonomous Vehicle Innovation, Cranfield University
- 27 Navistar, Millbrook, Bedfordshire
- 28 Network Rail HQ, Milton Keynes
- 29 Nissan Technical Centre Europe, Cranfield
- 30 PUNCH Flybrid, Silverstone
- 31 Oracle Redbull Racing (Formula 1), Milton Keynes
- 32 RML Group, Wellingborough
- 33 RS Components, Corby
- 34 SBD Automotive, Milton Keynes
- 35 TotalSim, Daventry and Silverstone
- 36 Silverstone Technology Cluster
- 37 Stellantis, Luton

AEROSPACE

- 38 Aerospace Integration Research Centre, Cranfield University
- 39 Aero Tec Laboratories, Milton Keynes
- 40 Aerospace Technology Institute, Cranfield
- 41 Aircraft Research Association, Bedford
- 42 Barclay's Eagle Labs: Aviation Technology, Cranfield University
- 43 Bluebear Systems, Bedford
- 44 Brinkley Aircraft Services Ltd, Bedfordshire
- 45 Cosworth, Northampton
- 46 Cummins Engine Plant, Daventry
- 47 Digital Air Traffic Control Centre, Cranfield University
- 48 Digital Aviation Research and Technology Centre (DARTeC) Cranfield University
- 49 Easy Jet HQ, Luton
- 50 Franklin Products Ltd, Milton Keynes
- 51 GKN Aerospace Services Limited, Luton
- 52 Gulfstream Aerospace, Luton
- 53 Harrods Aviation, Luton
- 54 Hybrid Air Vehicles, Bedford

- 55 Leonardo UK, Luton
- 56 Prodrive Composites, Milton Keynes
- 57 Rockwell Collins, Collins Aerospace, Leighton Buzzard
- 58 Safran, Brackley
- 59 Samad Aerospace Ltd, Cranfield

CLEAN GROWTH

- 60 Chelveston Renewable Energy and Innovation Park
- 61 East of Biggleswade Garden Village (project under development)
- 62 East Rockingham Resource Recovery Facility
- 63 Electric Corby
- 64 EV Experience Centre, Milton Keynes
- 65 Innovate Recycle
- 66 Pivot Power battery storage, Luton
- 67 RENEW innovation centre, Luton
- 68 Tresham Garden Village
- 69 Bedfordshire Green Business Network

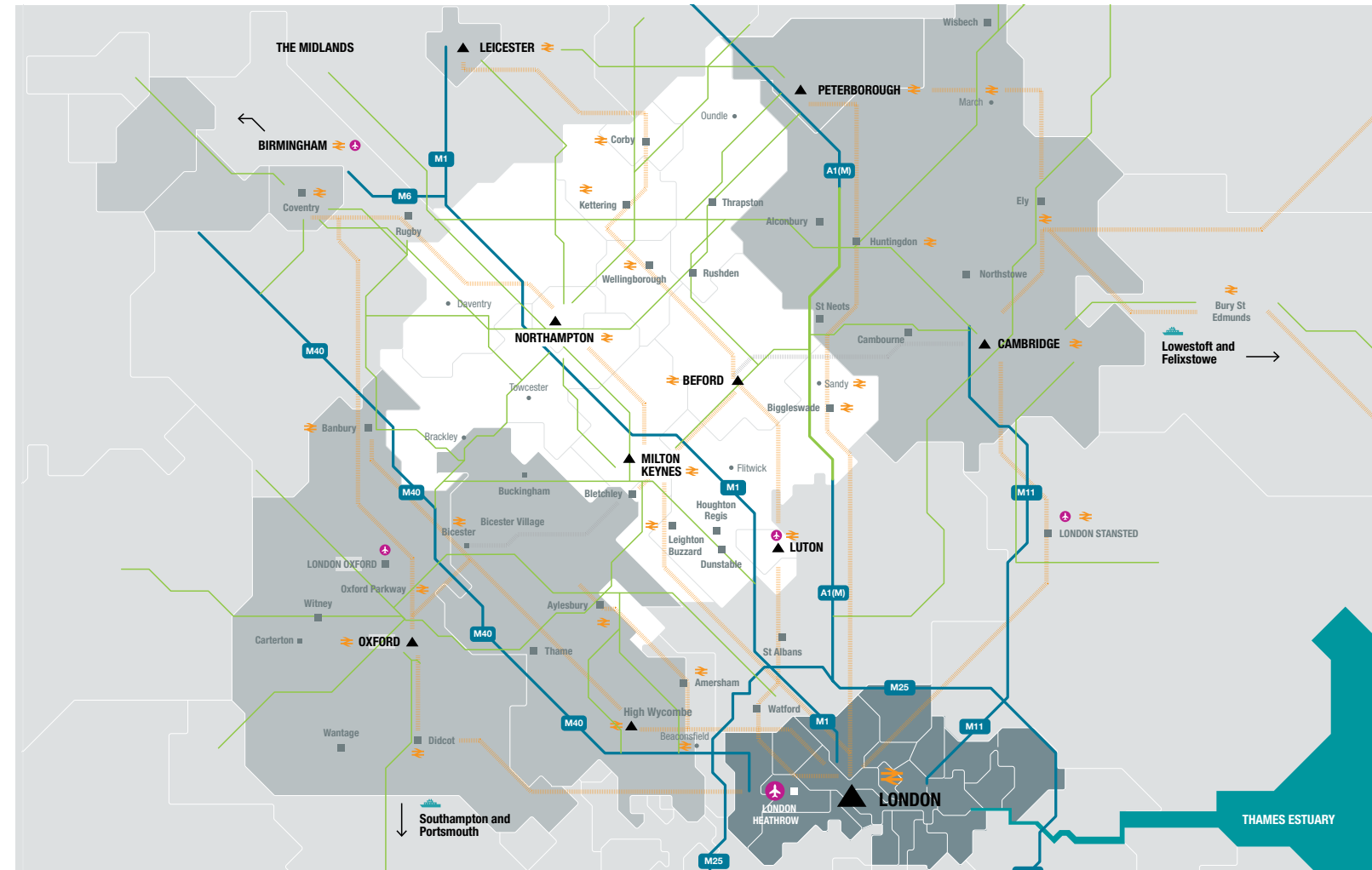
ACADEMIC AND TRAINING

- 70 Bedford College Advanced Engineering Centre
- 71 Cranfield University
- 72 Henry Ford Academy, Daventry
- 73 South Central Institute of Technology, Bletchley
- 74 MK-U
- 75 National College for Motorsport, Silverstone
- 76 Silverstone UTC
- 77 The Open University, Milton Keynes
- 78 University of Bedfordshire
- 79 University of Northampton
- 80 Volvo Training Centre, Daventry



Connectivity shapes our opportunity

**CONNECTING INNOVATION TO MARKETS,
BUSINESS TO SOLUTIONS, PEOPLE TO PLACES
– OUR AREA'S CONNECTEDNESS MAKES IT THE
SUCCESS IT IS TODAY.**



Amazon Distribution Centre, Marston Gate, Central Bedfordshire

Smart Move, Northampton



UTAC

FiveAI has brought together experts in artificial intelligence, engineering and mobility to create fully autonomous and shared transport for Europe's cities. It locates its business close to the fields of expertise they need. With six offices in the UK, including London, Oxford and Cambridge, all of their vehicle testing is done in this area, at UTAC in Central Bedfordshire.

World-class clusters involving the UK's leading high technology businesses operate and connect.

The South East Midlands area is central to this.

This area's prime location naturally places us at the heart of where key innovators and markets come together.

The South East Midlands acts as an international gateway to all of the strengths of the Oxford-Cambridge Arc. We have London Luton Airport with direct routes to over 100 destinations, rail links to Gatwick airport and St Pancras International rail services, as well as easy access to London Heathrow, London Stansted and Birmingham International airports, supported by strong North-South road and

rail transport routes throughout the area.

Looking to the future, new infrastructure backed by UK Government investment is unlocking further growth potential by enhancing East - West connectivity. This will greatly enhance travel links with our global city neighbours, Cambridge and Oxford, and further connect our area's towns and rural areas. Alongside regional and local transport infrastructure and technology upgrades to combat congestion, investments are being made to improve energy and digital infrastructure to boost business performance and efficiency and support growth.

Our area's connectivity is shaping business opportunity.

Bringing innovation, solutions and people together, we are creating the connected places of the future. With enhanced connectivity across the most innovative, fastest growing areas in the UK, the business opportunity is immense.



Intertek control room

Based in Milton Keynes, Intertek provides advanced technical expertise and electric propulsion testing to global original equipment manufacturers. The business has doubled in capacity every two years since 2015 and that is expected to continue as it leads the industry through offering the most comprehensive independent electric vehicle (EV) and hybrid powertrain testing capability in the UK.



Business Environment Growth by design

ECONOMIC GROWTH IS NO ACCIDENT. OUR ALREADY SUCCESSFUL BUSINESS ECOSYSTEM IS IMPROVING FURTHER THROUGH THOUGHTFUL, STRATEGIC DESIGN.



Over 77,000 businesses

1.8m

Home to 1.8 million people

2.4%

Real annual GVA growth (2014-2019)



Rushden Lakes retail and business park



Electric Vehicle infrastructure: Milton Keynes



Electric Corby



Above national average of productivity per worker: MK productivity 35% above average.

4.1%

housing completions, compared to 3% of national population

15%

birth rate, higher than national average at 13.5%.



1st year survival rates above national average

49.5%

of students studying in local higher education find employment in the area (10 % points higher than neighbouring areas)



3D printing

SECURING FUTURE SUCCESS: NURTURING THE NEXT GENERATION OF INNOVATORS

With £28m UK government investment, a consortium led by MK college, including Microsoft UK, has created a new Institute of Technology at Bletchley. It focuses exclusively on developing the competencies and skills for current and future technical and digital roles. This investment joins plans for the new MK:U, with a curriculum designed and delivered through Cranfield University with industry partners in STEM fields including artificial intelligence, digital design and robotics.

The South East Midlands is growing fast, outstripped only by London. People are attracted to our area by good quality, knowledge-based jobs, career opportunities and a high-quality of life without the associated cost of living in large cities.

Employment growth here out-performs national averages. Businesses choose our region to tap into a skilled workforce and an entrepreneurial spirit that runs right through our communities.

Our schools, colleges and universities strengthen and adapt their offer in line with local business needs. For example, the University of Bedfordshire has invested in a STEM facility, and has expertise in robotic technology, AI and data management. The University of Northampton's Institute of Logistics, Supply and Transport is working

with business to forecast future logistics capacity and support autonomous vehicle readiness.

Our area has ambition. We are building new homes, business units and lab spaces to respond to the needs and opportunities created in the fast-growing clusters in life sciences, space technologies, AI and data. At the heart of this is the ambition to create vibrant, environmentally sustainable places where people want to live and work. We have a wealth of cultural, creative and natural assets and a strong track record of designing new green and urban spaces that enhance our natural environment. In fact, our plans are to lead the UK's clean-growth agenda by strengthening our area's credentials as a testbed for pioneering green technologies, zero-carbon construction methods and cohesive urban design. The area already has extensive electric vehicle (EV) uptake and EV

infrastructure, with the growth rate in EVs registered in the area 14 percentage points above the national growth rate in the year to 2021 Q3.

Planned infrastructure investment, designed to maximise the Oxford-Cambridge Arc's growth potential, will provide businesses here with further advantage. Carbon reduction targets are to be designed into new projects and initiatives exist to make current business infrastructure more energy efficient.

Specialist support for businesses to start-up, scale-up and succeed can be reached through SEMLEP's Growth Hub. A network of inward investment and business development professionals in our local authorities work jointly with SEMLEP, government departments and other agencies to support companies looking to set up or expand in the area.

Employer-led education and training is fundamental to the South East Midlands. We encourage all local businesses to work with us to develop a talent pipeline of energetic, interested and skilled people to be the business leaders and employees of the future.



Opportunity

Connecting today's successes to shape the future



Engineering and Construction Skills Centre, Leighton Buzzard



DARTeC, Cranfield University



MK Gallery

IN THE SOUTH EAST MIDLANDS, WE ARE PROUD OF OUR ACHIEVEMENTS TO DATE. BUT WE PASSIONATELY BELIEVE THAT THIS IS JUST THE START OF OUR GROWTH SUCCESS STORY.



Mahle Powertrain, Northampton

The South East Midlands is the UK's most attractive place for commercialising new technologies. Our connected location, high-technology excellence and entrepreneurial culture combine to make it so. Our growth record in terms of GVA, businesses and people show that this is true.

SEMLEP is working with local partners, businesses and HM Government to rebuild the UK's economy following the challenges brought by the pandemic of 2020-2022. The South East Midlands is innovative, adaptable and resilient.

Together, we can build on the area's success, by investing in local skills, infrastructure and R&D, and capitalising on opportunities brought about by the way this area responded so rapidly and innovatively to the challenges we face.



The Exchange, Aylesbury

Connecting the area's high technology excellence, we want to continue to be at the forefront of testing and commercialising new technologies, and thinking innovatively about how people live, work and move around.

We have the space for businesses to grow. We want to grow further, faster and sustainably, and we want you to be a part of this.

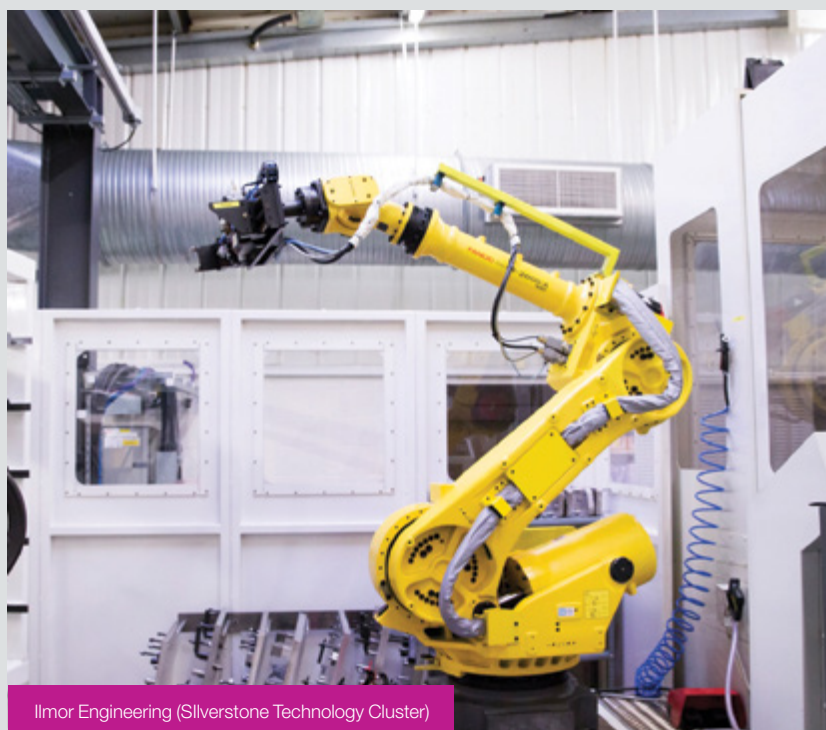
Make the connection.

SEMLEP
South East Midlands
Local Enterprise Partnership

HM Government



EDM Precision (Silverstone Technology Cluster)



Ilmor Engineering (Silverstone Technology Cluster)



Our partnership **connects** local and national investment and business support services.

TOGETHER, WE PROVIDE TAILORED, CONFIDENTIAL ASSISTANCE TO BUSINESSES LOOKING TO EXPAND OR LOCATE INTO THE SOUTH EAST MIDLANDS AREA.

We can:

- Give you detailed information about the region
- Support you with land and premises search, selection and acquisition
- Connect you to property agents, professional services, recruitment consultants, training providers, universities, colleges and public agencies
- Provide guidance on access to funding, including grants and investment
- Introduce you to corporate networking and peer networks, trading partners and supply chains
- Assist you through one to one business support



Engine build, Mahle Powertrain



Chelveston Renewable Energy park

Chelveston Renewable Energy Park

Chelveston Renewable Energy Park has been designed to integrate high energy consumer businesses with large scale direct supply renewable energy generation on-site. The park also includes large scale energy storage facilities to shift power produced either in sunny or windy conditions into a base load profile to maximise the off grid renewable status of the tenants. Other projects on the site include renewable hydrogen production.

MK:5G

An industry-University consortium, led by Milton Keynes Council, has created a new testbed that deploys a dedicated 5G infrastructure and a data hub facility to trial applications in mobility, health and wellbeing and energy.



MK:5G

SEMLEP
South East Midlands
Local Enterprise Partnership



HM Government

Innovation Centre
Cranfield University Technology Park
University Way
Cranfield
Bedfordshire
MK43 0BT

E: invest@semlep.com

T: 01234 436100

W: semlep.com



@SEMLEP



SEMLEP



SEMLEP

South East Midlands
Local Enterprise Partnership

Published by SEMLEP in June 2019

SEMLEP is a registered company limited by guarantee

Company registration no. 0762124