



SEMLEP

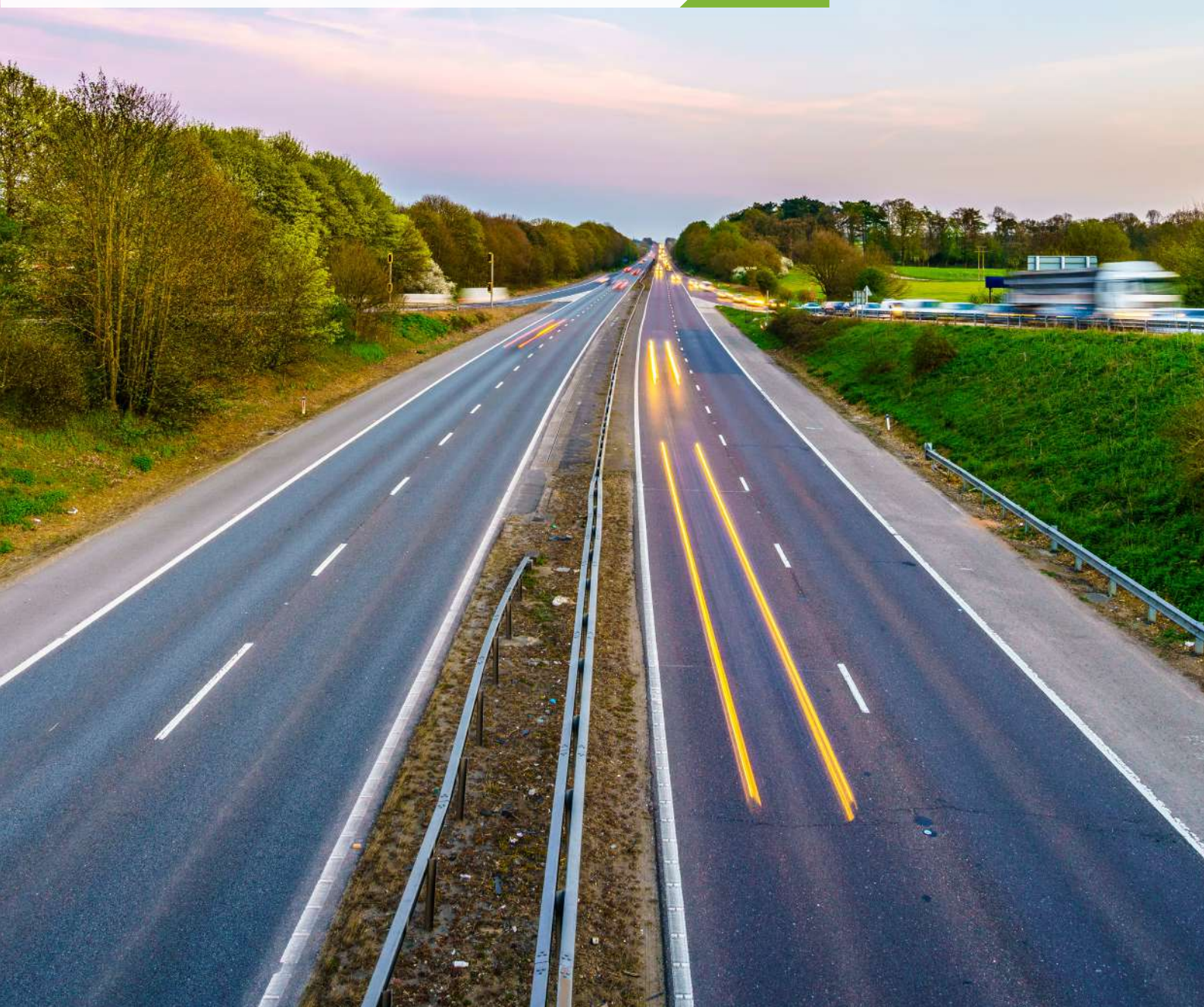
South East Midlands
Local Enterprise Partnership

The UK's logistics hub: The South East Midlands

Location, education & innovation

- Great central location for supply chain operators
- Vast array of logistics parks: current and in development
- E-fulfilment epicentre
- Strong and supportive business environment
- Sustainability to the fore - modern, lower energy-use warehouses and fewer road miles

Located at the midpoint of London, Birmingham, Oxford and Cambridge, the South East Midlands is the UK's premier hub for logistics.



Are you?

A logistics company looking to grow or relocate your operations?

A service and software solution provider or developer supporting the logistics sector?

An investor looking for property investments in a dynamic, high-return sector, with strong market advantages as the sector evolves towards e-fulfilment?

In a period of rapid change for global logistics, the South East Midlands retains its position as first choice for logistics and supply chain operators.

The area, recognised as having one of the most innovative regional economies, has twice as many people employed in the logistics sector than the national average.

Businesses here benefit from a central location, connected into the major arterial transport routes, with innovation and investment in first-last mile connectivity. Collaborative networks of industry, universities and government support innovation in the sector, and several post and under-graduate training providers offer tailored business, logistics and supply chain related courses developing a valuable and diverse pipeline of skilled employees for local logistics businesses.

The massively growing e-fulfilment market and the need to develop sustainable solutions is transforming our industry for the better. Property developers are also creating carbon-neutral warehouses in both build and operation, allowing operators to install new technologies in robotics and supply chain analytics.

Supporting your business

SEMLEP, the South East Midlands Local Enterprise Partnership, works to bring organisations together to create an environment in which the logistics sector and supply chains can access support to embed technologies into business operations to enhance both productivity and pursue the shift towards a decarbonised future.

Our commitment is to offer a broad network of support to all current logistics companies; and to engage and actively help any companies considering siting a new distribution operation, or support company, within the region. Take a look...

The South East Midlands Gateway

A gateway to UK logistics, giving easy access to road and rail freight

- Locational proximity to the UK's largest conurbations – London and Midlands
- Connectivity to road infrastructure (M1, A1, A14)
- At the centre of the UK's premier innovation region, the Oxford-Cambridge Arc

INBOUND LOGISTICS
Similar distance from 3 container ports
Felixstowe, Thames Gateway & Southampton

OUTBOUND LOGISTICS
2 Largest conurbations within 2 hours
London & Birmingham

PORT

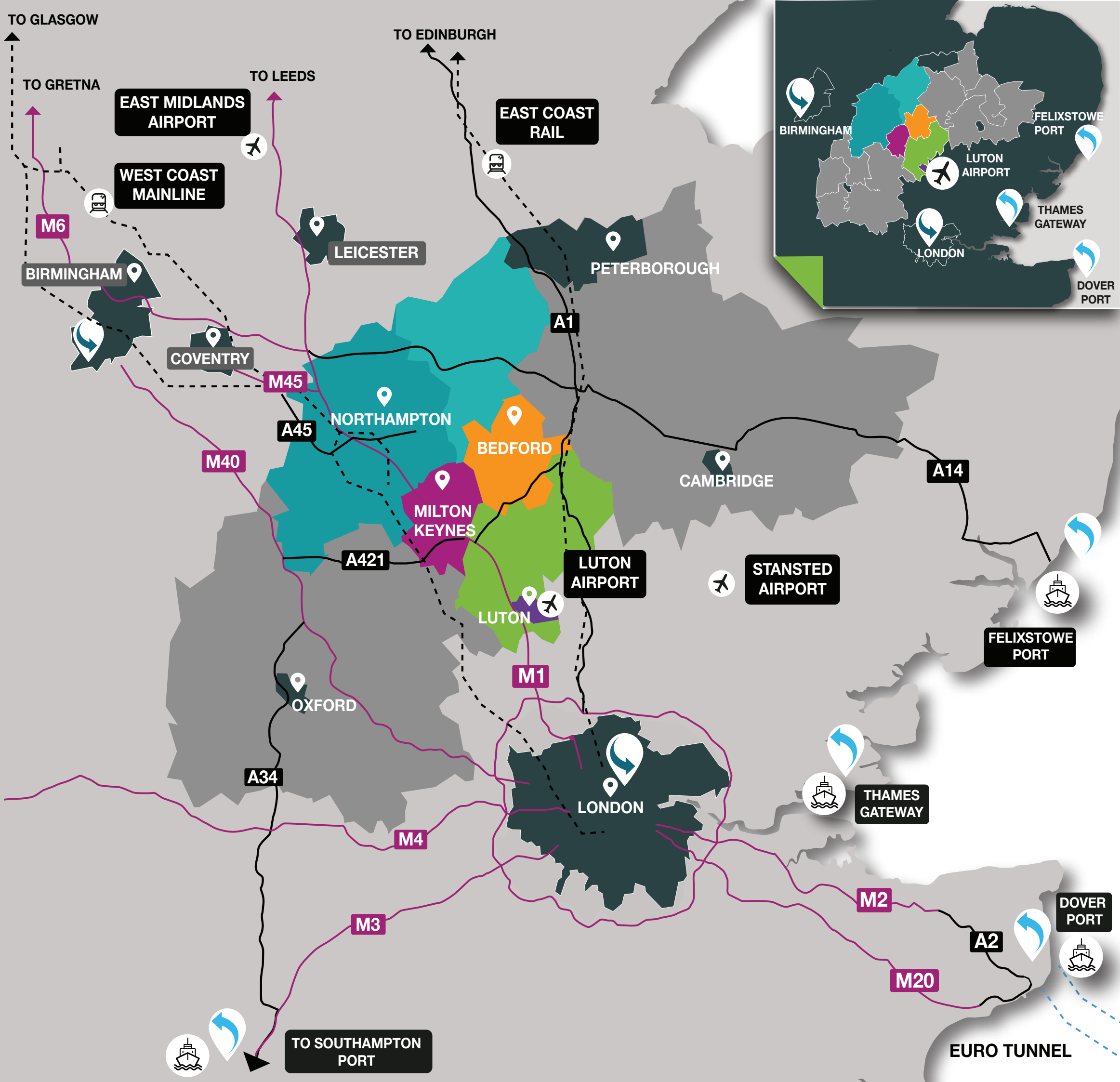
AIRPORT

RAIL LINE

MOTORWAY

A ROAD

GREY AREA SHOWS
OXFORD CAMBRIDGE ARC





The e-fulfilment revolution

The dynamic growth of e-fulfilment in the region exemplifies our key logistics capabilities.

- Many modern high bay warehouses with docking
- Array of couriers (DPD, DHL, Royal Mail)

The South East Midlands is packed with e-fulfilment companies who combine innovative digital capabilities and integrate with the area's advanced courier network, to provide cargo visibility, traceability and fast delivery for businesses and consumers.

Logistics parks are being constructed to the highest building standards (BREEAM), with many new and forthcoming carbon-neutral parks in both build and operations.

Increasingly, companies in this area are investing in warehouse technologies such as warehouse management systems, automation, data analytics, robotics, and last mile innovations like electric vans and drones. (The largest European producer of electric vans, Vauxhall, is within the region.)

There is also a significant focus on Wireless Inventory Trackers and Internet of Things to enable the rapid exchange of information between all parties of a supply chain, which means logistics firms and their customers benefit from enhanced control, planning, and monitoring.

Meet just a few of the leading e-commerce businesses that have chosen to site major operations in the South East Midlands ...



ControlPort

James and James

Northampton-based James and James specialises in D2C eCommerce fulfilment, supporting organisations worldwide.

With its central location, James & James can have frequent and later collections from couriers, or reduced shipping time to customers. This allows for greater operational flexibility and improved customer service.

The company's award-winning order fulfilment software, ControlPort, integrates with customers' sales channels, retrieving orders as they come in. The picking and packing then takes place – and throughout the whole process customers can log on and monitor progress 'live'.



James and James

James and James was founded by University of Cambridge graduates James Hyde and James Strachan in 2010 following their search for a modern fulfilment solution for an e-commerce business they were working for.

In 2020, they received their first external investment – £11 million from private equity investment firm, LDC.

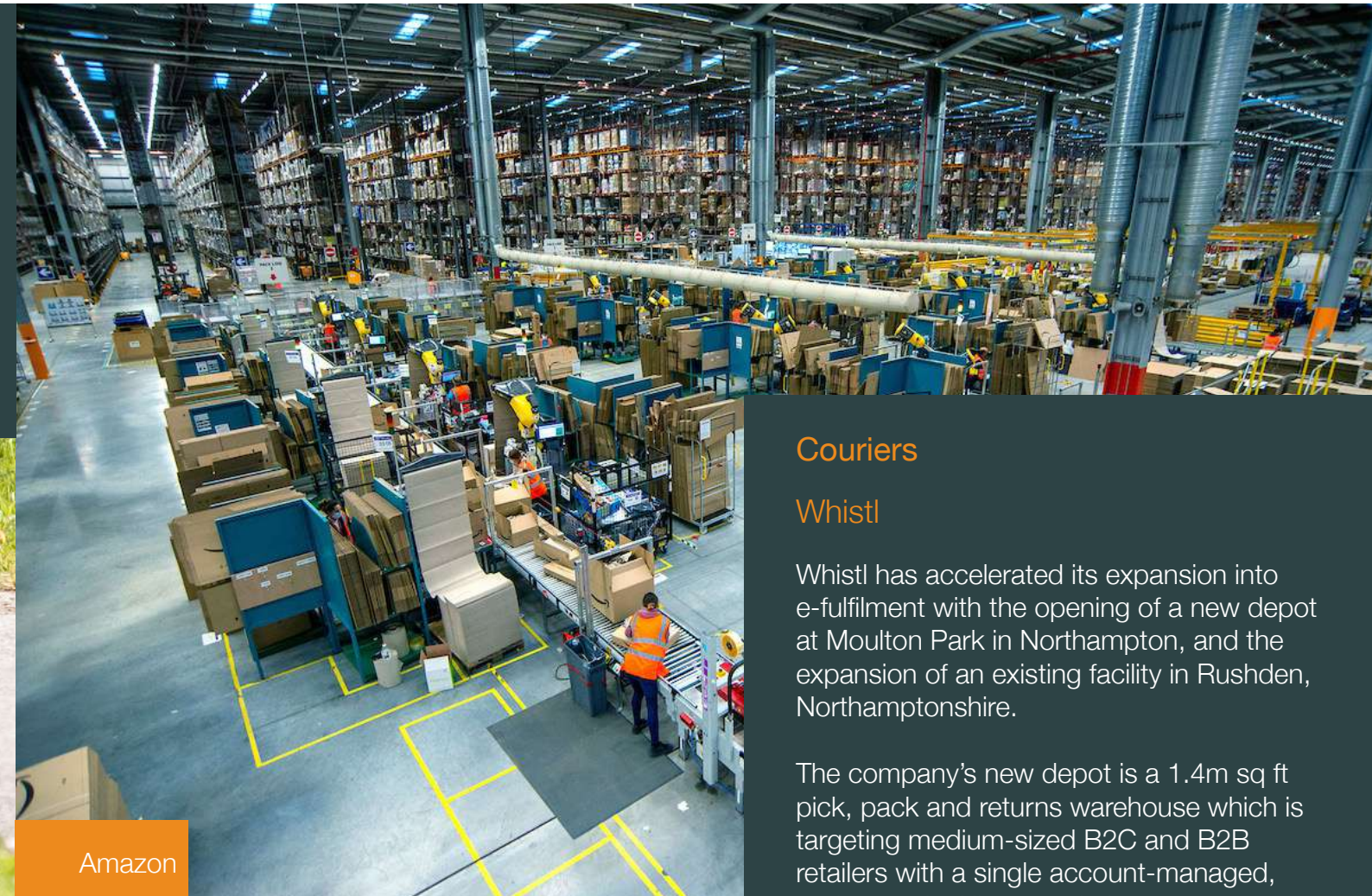
They are two-time Queen's Award winners, recognising their achievements in Enterprise and International Trade. They are located on Liberty 196 – a new Prologis and Equation Properties facility on Brackmills Industrial Estate in Northampton. They are an example of a highly innovative company, able to grow significantly and retain staff in part thanks to the extensive range and flexibility of warehousing within the Brackmills Estate.



Starship Robots

ABB Service Robotics

ABB is a leading supplier of industrial robots and robot software. Its research and development team of system designers, engineers, project managers and installers, and ABBs UK showroom is based in Milton Keynes.



Amazon

Couriers

Whistl

Whistl has accelerated its expansion into e-fulfilment with the opening of a new depot at Moulton Park in Northampton, and the expansion of an existing facility in Rushden, Northamptonshire.

The company's new depot is a 1.4m sq ft pick, pack and returns warehouse which is targeting medium-sized B2C and B2B retailers with a single account-managed, end-to-end fulfilment solution.

Wincanton

Wincanton's state of the art automated eFulfilment warehouse in Rockingham, Corby is a shared warehouse enabling clients to flex their space needs to meet changing customer and consumer requirements.

The company has chosen to locate a new Innovation Centre on this site, providing a showcase of the cutting-edge design and technologies that benefit Britain's supply chains, as well as being an education tool for local schools to develop talent for the sector.

Wincanton also recently acquired Cygnia, a specialist mid-market eCommerce and multichannel eFulfilment provider with multiple fulfilment centres in Northampton.

Royal Mail / ParcelForce

Royal Mail is developing sites at MK Magna Park and DIRFT in Daventry.

Amazon

Amazon, a global leader in e-commerce, currently has six warehouses in the region, with recent developments at Milton Keynes and Bedford. They have been able to source warehousing locally at short notice as their online sales grew during the pandemic.

Robotics are utilised in many of the company's fulfilment centres, with robot drive units used to bring shelving units to team members to stow products or pick customer orders.

This automation makes the fulfilment centre operation more efficient, through reduced picking time and fewer pick errors, enabling staff to focus on other tasks.

Ark-H Handling Ltd

This web fulfilment company focuses on e-commerce. From its headquarters in Bedfordshire, Ark-H Handling Ltd offers its customers the full range of fulfilment services - including handling, POS, kitting, system integration, e-commerce, contract packing, sampling, customer care, data management and email broadcasting.

Ark-H Handling Ltd responds to the wide spectrum of supply-chain opportunities - from high-end tech, with huge AI potential, through to embedded customer service options.

The company is committed to training, development, and sustainability, with a clear objective: 'to build the multi-skilled workforce of the future'.



James and James

Logistics Parks

Prime locations and highly professional developers

- Over 12m Sqft of warehousing currently under development
- Region is equidistant from 3 key ports (Felixstowe, London Gateway and Southampton)
- Allowing flexibility of sourcing and port access
- Fewer road miles to destinations
- Logistics Parks are located across the region

MOTORWAY

A ROAD



WAREHOUSE



HEAD OFFICE



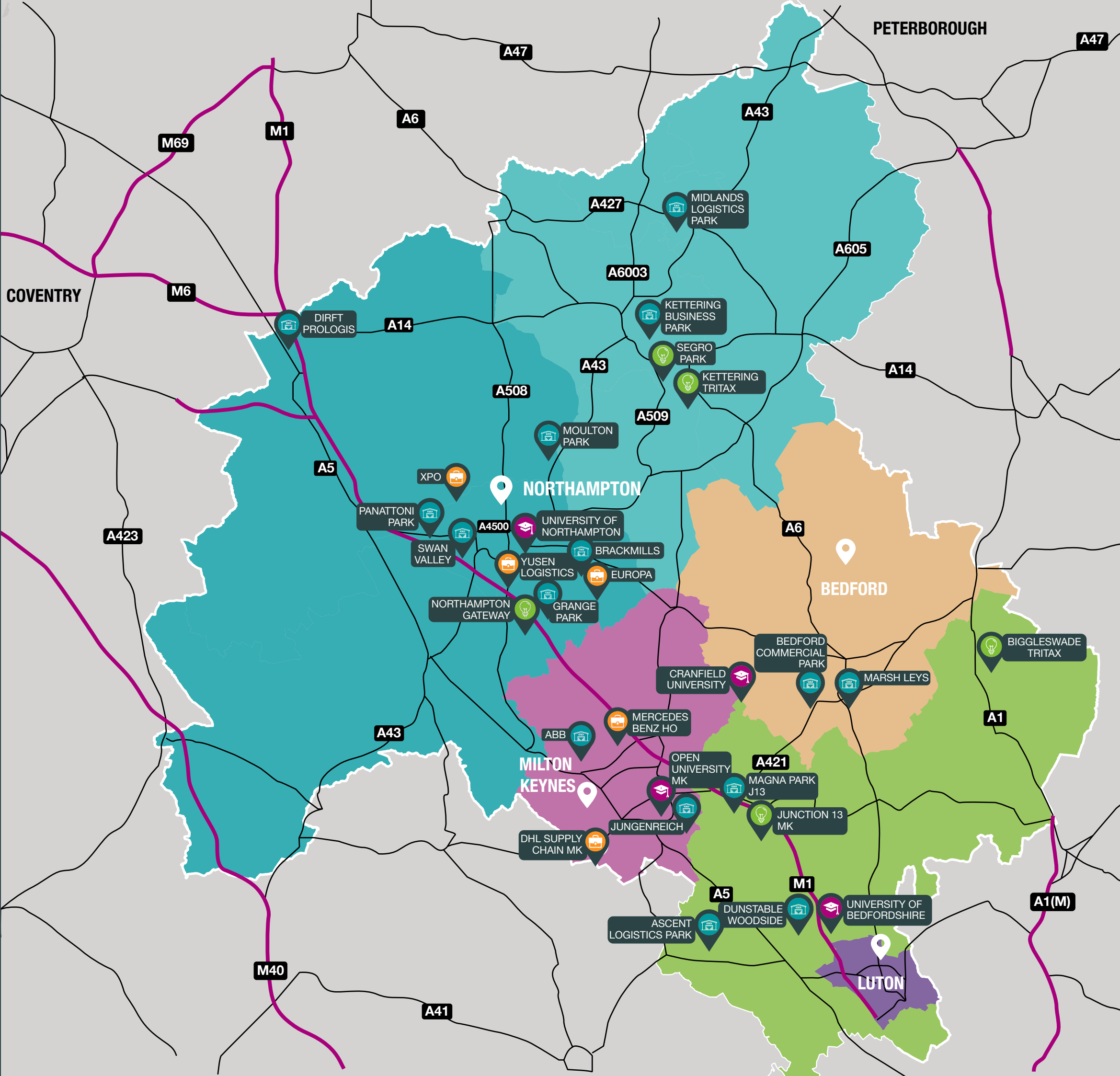
UNIVERSITY

DIRFT PROLOGIS
PANATTONI PARK
SWAN VALLEY
ASCENT LOGISTICS PARK
GRANGE PARK
BRACKMILLS
MOULTON PARK
KETTERING BUSINESS PARK
MIDLANDS LOGISTICS PARK
BEDFORD COMMERCIAL PARK
MARSH LEYS
MAGNA PARK J13
ABB
DUNSTABLE WOODSIDE



NEW DEVELOPMENTS

SEGRO 1.2MSQFT
TRITAX: BIGGLESWADE & KETTERING 2.3M SQFT
NORTHAMPTON PINEHAM 1MSQFT
PANNATONI (1MSQFT)
NORTHAMPTON GATEWAY (5M SQFT)
BEDFORD (250KSQFT) TBC LOCATION
MILTON KEYNES J13 SOUTH (2.3MSQFT)



The continued growth of online sales, the changing needs of supply chains as reshoring occurs, and the differing scale and height of operations as automation projects are introduced, means the demand for prime industrial and logistic warehousing has never been greater.

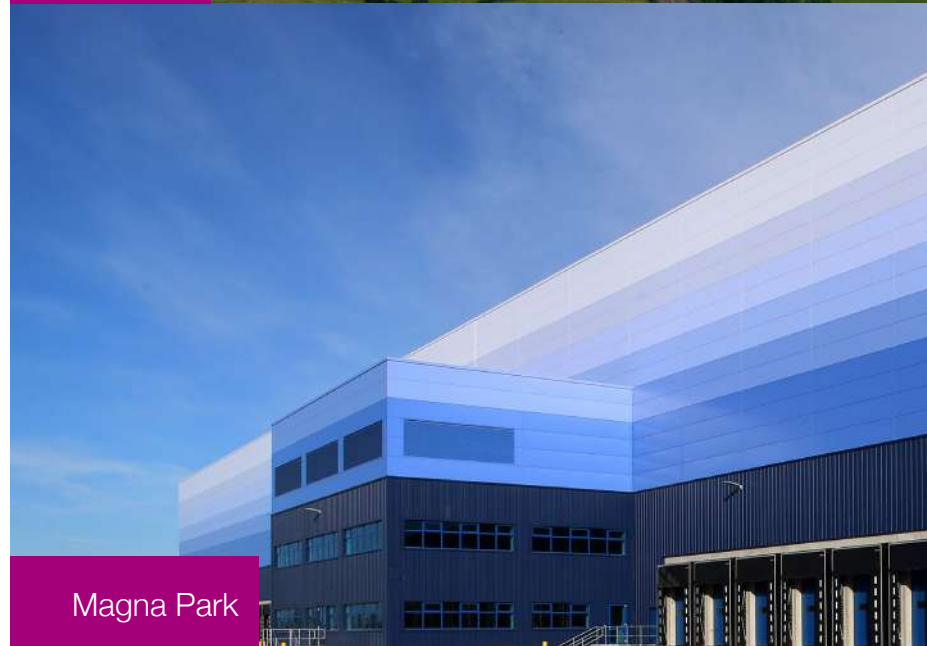
The strategic location and a unique and diverse mix of distribution centres means that the area can support Retail RDCs, NDCs and global freight operations (such as XPO, Yusen, DHL Supply Chain and Europa).

As a result, we are home to one of the greatest concentrations of fulfilment warehouses and courier operators in the UK.

A quick outline of key distribution parks demonstrates the diversity and ability to meet most needs:



DIRFT



Magna Park

DIRFT - Road & Rail Flexibility

Daventry International Rail Freight Terminal (DIRFT), one of the UK's major rail-road intermodal freight terminals, at the heart of the UK's domestic intermodal sector, enables occupiers to respond quickly to changing demand and reduce carbon emissions throughout their operations and supply chain. Its proximity to the M1 and the West Coast Main Line, and links to Felixstowe, has attracted big names, including Sainsbury's, Tesco, and Eddie Stobart. In 2021 Royal Mail announced plans to expand on to the estate.

Woodside

Most southerly distribution park in the South East Midlands allowing access to London within 60 mins. This park is based at the southern end of the region, in Dunstable, and benefits from a new link road to the M1. It is home to WH Smith and DPD, among others.

Midlands Logistics Park Proximity to port and major road links

Its strategic location on the A14 in Corby ensures businesses have access to both the East Coast Ports, and the Midlands/- South East market. North- South connectivity is provided by the A1. This Park, whose occupiers include Eddie Stobart and BSH Home Appliances, is known for its high specification, offering building heights of up to 30m.

Magna Park- Links to London in less than 90 mins

Situated between junctions 13 and 14 on the M1, this Milton Keynes park is home to the distribution operations of some of the UK's largest brands including John Lewis, River Island, Waitrose, Barr Soft Drinks, Amazon, and UK Mail.

Brackmills Industrial Estate

Vast array of warehouses of differing sizes offering flexibility and ability to grow without leaving the site.

James and James, Panasonic, Dachser and Decathlon are just a few of the businesses that have chosen to invest in this Northampton estate, which has had Business Improvement District (BID) status for over 10 years.

Bedford Commercial Park Sited between the M1 and A1

This 45-acre mixed-use development offers units of all sizes and is home to i-Worx – delivered in partnership with Bedford Borough Council, with funding through SEMLEP's Local Growth Fund – which provides smaller units suited to advanced technology and engineering workshop units.

Planning to meet your future distribution needs

The South East Midlands is dynamic, innovative, and supportive of the logistics sector. Here are logistics parks currently under construction that will deliver an additional 8.5msqft of warehouse space:

Ascent Logistics Park

This 25.5-acre park, in Leighton Buzzard, Bedfordshire, is now under construction, with the first units due to be delivered in Q4 2021. The park will be zero carbon, with features including LED lighting to offices, electric vehicle charging points and solar power generation.

Northampton Gateway

SEGRO Logistics Park Northampton Gateway (SLPNG) is a large-scale Strategic Rail Freight Interchange (SRFI). The Development Consent Order permits the development of distribution buildings with a footprint of around 5 million square feet.

Segro at Kettering

SEGRO Park Kettering Gateway is a major new development providing up to 1.2 million sq ft of industrial / warehousing space, with units from 50,000 to 700,000 sq ft, adjacent to the A14.

Tritax Symmetry at Kettering

Planning has been granted for up to 2.3 million sq ft of high-quality logistics floorspace, which has the potential to create up to 2,800 jobs and will be a major contributor towards Kettering's planned economic growth.

Tritax Symmetry at Biggleswade

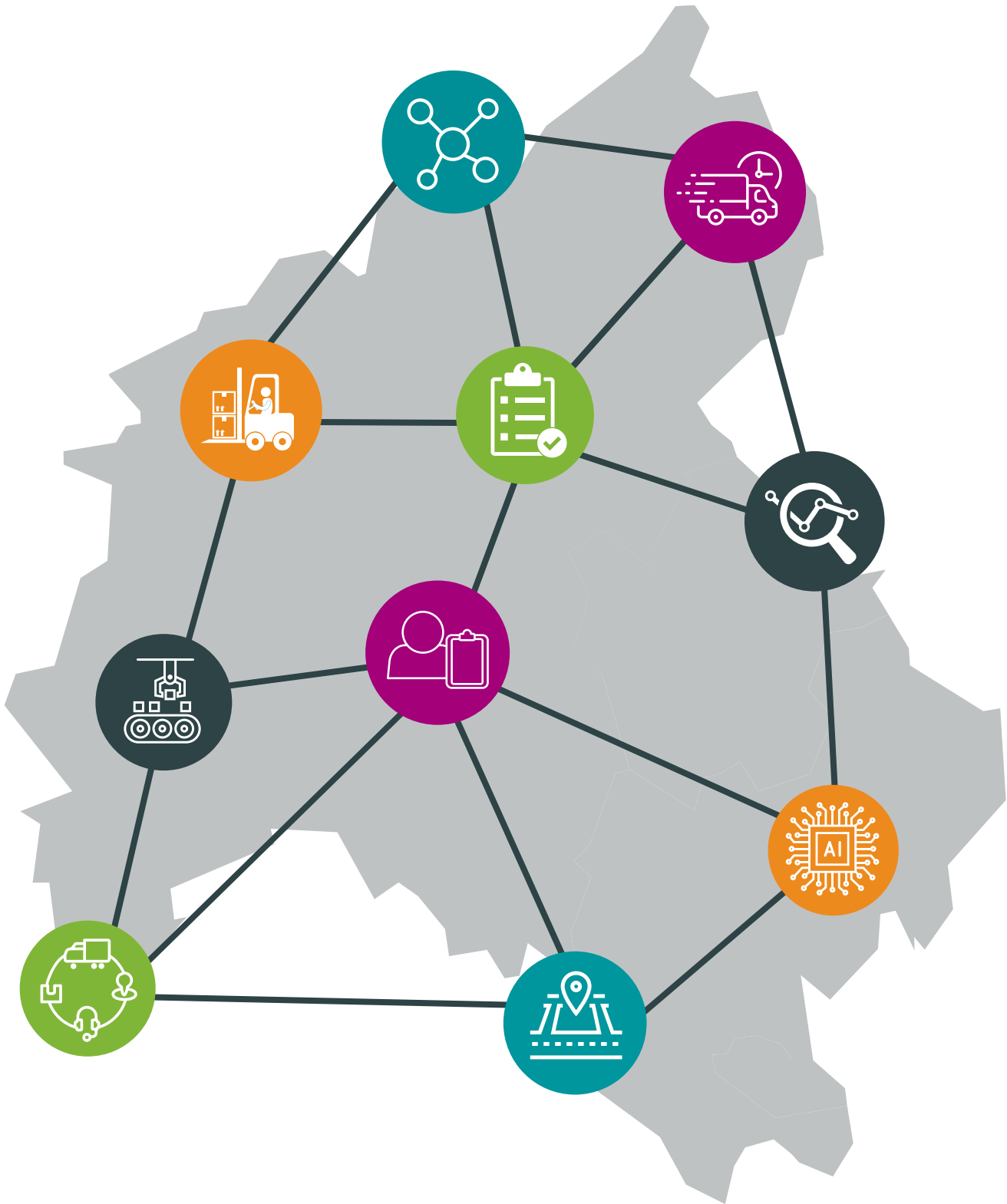
Tritax Symmetry are now on site delivering 577,000 sq ft in four units, with completion due in September 2022. The scheme will create considerable GVA locally as well as creating hundreds of jobs. One unit is already committed to an occupier with the others being speculatively developed.



Brackmills Industrial Estate

Comprehensive logistics ecosystem

The South East Midlands has all the key logistics operators, technical services, and a broad range of consultancy companies within the region.



Inbound Supply Chains

Proximity to world leading distribution operators.



Forklift servicing

Access to the full range of quality intralogistics solutions you will need.



Outbound Supply Chains

All food and most consumer retailers have regional or national distribution centres in the region, giving ease of access, flexibility, and assurance of swift service to suppliers.



Automate your warehouse

Several installation and support operations for automated warehouses, helping to integrate AI and robotics to drive efficiency and capacity. ABB have their R&D and showroom at Milton Keynes.



Skilled staff

Local Universities, colleges, and training academies nurture trained logisticians from apprenticeships to PHD.



Access to land and property

Experts including Prologis and Tritax Symmetry are based here.



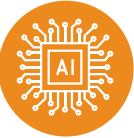
Research support

Local University and college students primed to provide high quality, customised research.



Test your products

Local Universities, colleges, and training academies nurture trained logisticians from apprenticeships to PHD.



Digital Innovation

MK:U (the new university at Milton Keynes) and the South Central Institute of Technology centre at Bletchley focus on digital economy skills in new technologies including AI, robotics and cyber security and practical entrepreneurship-orientated skills to support new generation of digital leaders and experts.



Ease of delivery

Carriers including DHL, Royal Mail and Whistl all have major courier hubs in this area – ensuring e-fulfilment houses have the flexibility to meet brand service requirements.



Cranfield University

Cranfield University

Cranfield University is ranked as one of the top logistics departments globally. The university focuses on postgraduate degrees (MSc and PhD) in logistics, supply chain and procurement. They enrol 190 student p.a., developing a highly technically-skilled workforce for research and development and future logistics leaders. Cranfield University's Logistics and Supply Chain Management MSc is ranked 2nd in the UK and 11th in the world by QS World University Rankings: Masters in Supply Chain Management Rankings 2021. This MSc is also offered on part-time basis and it is supported by the Apprenticeship Levy.

In addition, the logistics team runs the Agile Club, a forum where senior logisticians meet with faculty and discuss contemporary logistics and supply chain challenges. Finally, the logistics team works on many research and consulting projects and delivers numerous executive programmes.

The South-Central Institute of Digital Technology (IoT)

The IoT based at Bletchley Park, Milton Keynes, provides higher level technical qualifications and short courses, working in partnership with companies who champion digital innovation and training. Courses range from data and networking to security and animation.



University of Bedfordshire



University of Northampton

University of Northampton

The University of Northampton was the first university in the UK to be named as a Changemaker Campus, a designation for campus-wide excellence for social innovation. Their research strengths are in circular economy, decarbonisation, intermodal activities and infrastructure planning. Their courses include MSc Logistics and Supply Chain Management, MSc International Business Management, MSc Business Analytics and BA International Logistics and Trade Finance.

The University hosts the Northamptonshire Logistics Forum, an industry led collaboration group which supports the sector.

Open University

The Open University provides short courses, micro-credentials, undergraduate and post-graduate courses, including PhD. Their distance learning can complement and broaden the range of learning approaches, particularly appropriate to companies looking to develop their own talent or upskill existing employees.

Lecturers cover the key supply chain disciplines of supply chain analytics, human behavioural factors in Operations and Supply Chain Management and improving the processes of production to increase efficiencies of supply.

OpenLearn is the University's free learning platform. It includes over 1,000 courses, with content written by academics and subject specialists, spanning the breadth of the OU curriculum as well as cross-curricular content like study skills, careers and employability. Free learning resources include topics of supply chain management, logistics and business and management.

Further Education Colleges

Our network of further education colleges and Institute of Technology includes some of the best in the country and all encourage and welcome employer engagement and partnerships to provide relevant, quality pathways and skills development for business operations and management, engineering and digital occupational groups.



Open University

MK:U

MK:U is a new kind of university for the 21st century, designed and delivered with business. It focuses on new technologies and industries, providing technical, creative and commercial skills for the digital economy. MK:U offers four Level 6 Degree Apprenticeship courses - Chartered Manager, Data Scientist, Digital Technology Solutions and Cyber Security.

The University of Bedfordshire

The University of Bedfordshire is among the top 10 universities in the UK for delivering CPD into businesses. Alongside the largest professional Degree Apprenticeships offer in the South East Midlands, they also offer several postgraduate courses such as AI and Robotics or Information and Data Systems to upskill existing purchasing, logistics and supply chain leaders.

Their courses are informed by the university's research within the logistics and digitalisation sectors such as the REAMIT European collaboration. This project utilises new digital technologies to support food waste reduction through deployment of IoT sensors fitted in trucks and warehouses, enabling continuous monitoring of supply chains quality parameters on food movements.

Cultivating a skilled workforce

A range of universities and colleges cater to all educational levels and styles of learning.

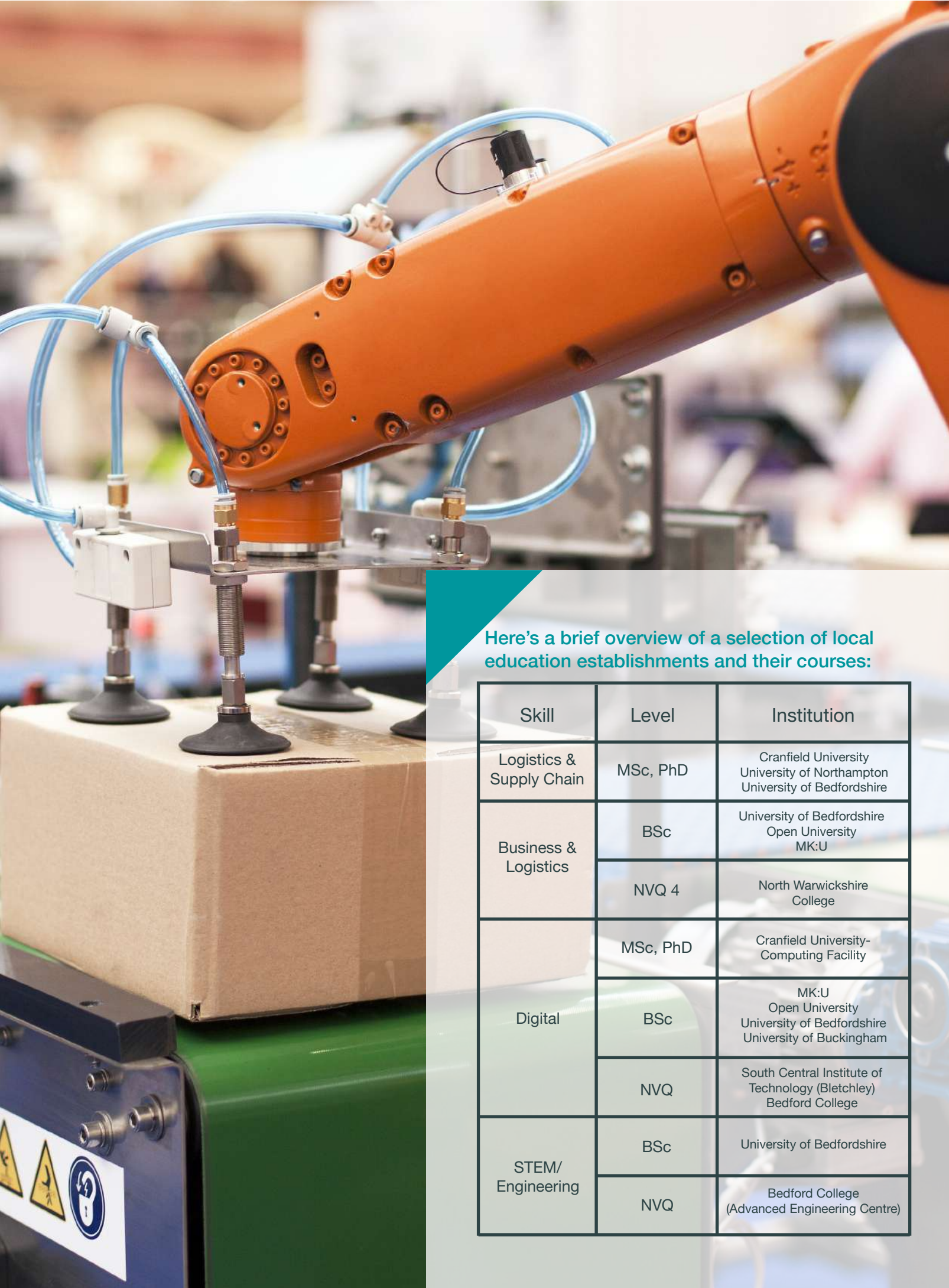
- **Technically skilled workforce**
- **Talent pipelines being developed by colleges and private trainers**
- **Five Universities with logistics and business school capability at graduate and post graduate levels**

Logistics is a high growth and dynamic sector which is undergoing significant changes. Many logistics roles require digital skills and this will only become more prevalent with increasing specialisation and digitalisation.

Our region has a real strength in the educational establishments related to logistics specialisms and the breadth and level of courses available.

Crucially, there is broad base to teaching specific skills at all our universities and colleges, including supply chain, digital skills, and core STEM skills.

Links to establishments and further information can be found at www.semlep.com/skills-for-business/



Here's a brief overview of a selection of local education establishments and their courses:

Skill	Level	Institution
Logistics & Supply Chain	MSc, PhD	Cranfield University University of Northampton University of Bedfordshire
Business & Logistics	BSc	University of Bedfordshire Open University MK:U
	NVQ 4	North Warwickshire College
Digital	MSc, PhD	Cranfield University- Computing Facility
	BSc	MK:U Open University University of Bedfordshire University of Buckingham
	NVQ	South Central Institute of Technology (Bletchley) Bedford College
STEM/ Engineering	BSc	University of Bedfordshire
	NVQ	Bedford College (Advanced Engineering Centre)

Alternative training, supporting and developing talent

One of the newest initiatives is the **Goodwill Supply Chain Academy**, an agile logistics and supply chain sector-specific training provider. Delivering a national provision that is socially geared and designed as an end-end solution to take care of candidates mental health, well-being, resilience and vocational training with routeways into employment.

This Academy has formed a partnership to design and deliver the Prologis Warehouse and Logistics Training Programme (PWLTP). The programme aims to create sustainable career opportunities for a diverse range of job seekers, by providing accredited training, personal development, and new insights to the dynamic and exciting supply chain sector.

The programme will be delivered out of the Prologis Hub located at DIRFT.

Think Logistics is an award-winning programme that works to make the logistics, transport and supply chain profession an attractive career of choice. In partnership with CILT, a leading industry body, and Bis Henderson (both located in the region) along with prominent logistics companies, Think Logistics host workshops, mentoring, internships and work placements, meaning secondary school, college and university students can get immersed in the world of logistics and understand potential careers.

The Chartered Institute of Logistics and Transport (CILT) is the Chartered body for professionals involved in the movement of goods and people, and their associated supply chains. Delivering career development, relevant information, networking and professional recognition. The UK headquarters are based in Corby.

CILT(UK) brings together five distinct communities; sustainability and the global community, planning in transport, passenger movement, logistics and freight movement and operations and supply chain management. They provide specialist activities and multi-sector engagement through their associated forums and policy groups and their professional qualifications and academic standards are recognised globally.

Helping companies to future-proof operations

- Sustainability is at the core of area's future
- Strengthening access to R&D and technical testing
- Oxford-Cambridge Arc, Government support to become the UK's premier innovation region

We recognise it is immensely difficult to forecast your future requirements. So, we are looking to the future to identify how we can support companies and manage some of the risks. For example, ensuring new operations:

- have access to renewable energy
- can access logistics expertise, research and funding
- have ease of access to road and rail freight

South East Midlands companies are at the forefront of renewable energy production, with fast moving developments being made in the field of hydrogen. For example:

Northamptonshire's Chelveston Renewable Energy Park is the UK's largest combined renewable energies facility, with solar, wind and hydrogen. It will offer up to 32,900M2 of employment space for high-energy use. Its hydrogen generation facility and blended hydrogen is now being tested in HGVs on site.

Kettering Renewable Energy Park will support existing consented and new schemes within Kettering to meet their renewable energy targets.



Logistics R&D, testing and innovation

Cranfield University's Centre of Logistics, Procurement & Supply Chain Management is based in the School of Management and it is one of the leading centres worldwide. Through major industry-university-government collaboration, Cranfield University is a partner in multiple national research and development programmes across, for example, aerospace, transport & manufacturing, defence and security, and has launched a National Applied Hydrogen Institute designed to speed up the emergence of a full scale H2 economy

Their technical facilities range from AI and robotics to new low carbon powertrains for HGVs, with dedicated labs for:

- Future Warehousing (industrial robotics and automation tested)
- Supply Chain Analytics
- Multi-user Environment for Autonomous Vehicle Innovation (MUAEVI) 'full scale living lab' for on and off-road autonomous vehicles
- Drone airstrip and test facility

Other testing facilities available in the South East Midlands include:



UTAC

UTAC at its site in Millbrook, it uses its test tracks, instrumentation, and soft targets to test Advanced Driver Assistance Systems (ADAS) and vehicle active safety features.

MAHLE Powertrain's UK base is in Northampton. It researches, develops and manufactures conventional combustion engines as well as hybrid systems and electric units.



MAHLE Powertrain



MUA EVI



Intertek

Intertek Transportation Technologies

has its automotive testing laboratory in Milton Keynes, specialising in the testing of internal combustion engines, electric propulsion systems, fuel additives and lubricants, and hybrid powertrain systems.

Connected Places Catapult

supports the Department for Transport's (DfT) Transport-Technology Research and Innovation Grants (T-TRIG) programme. In the last five years, the programme has provided £4.6m of grants to support over 140 projects across the breadth of the transport technology spectrum. This includes an electric HGV range extender, drone navigation collision avoidance technology and electric cargo delivery bikes.

Delivery robot expert **Starship**, head-quartered in San Francisco, chose Milton Keynes as one of the first UK sites to roll out its robots to address the challenges of last mile delivery. With a combination of mobile technology, autonomous robots and partnerships with stores and restaurants, Starship's robots can carry items within a 4-mile (6km) radius. In April 2021 the company announced its robots had completed 2 million emission free miles. Working with the Co-op, the company has expanded to other towns and cities, including Northampton.



Starship Delivery Robots

How we can help

SEMLEP has a range of support systems to aid companies landing in the region

SEMLEP works to build a strong local economy by tackling barriers to sustainable growth and supporting job creation for the future prosperity of communities across the South East Midlands.

One way in which we do this is through direct business support. Whether you're a start-up logistics firm, or an established global firm wanting to learn more about the opportunities in the area, our team can help.

Connected support

At SEMLEP, we understand that every business will have specific and unique requirements. So, we take an account management approach, designed to understand your businesses precise needs and develop bespoke plans to support each business whether you are relocating or an inward investment.

SEMLEP's Growth Hub works with partners across the area to form a network of connected business support. Our team of Business Advisers can support you to find the support best-aligned to your needs. From seeking new premises in the area to learning about funding opportunities available, we're here to help.

We focus on the logistics sector, ensuring we have great links with logistics businesses and our universities. We run a logistics and supply chain sector meeting, to ensure we understand current issues, share best practice amongst operators and ensure links are developed between business and local authorities.

Our support includes, but is not limited to:

Analysis

- Providing the data, knowledge and experience of the region to aid analysis and decision making
- Share/supply data on the area's economic and technical capabilities
- Make introductions to local government contacts and property developers
- Determine the different sources of renewable/ sustainable energy.
- Provide an initial evaluation of the skills base, and potential employment cohort
- Identify possible funding streams

Planning

- Offer support to navigate local planning policy and provide pre-application advice.

Recruitment

- Advice and support on recruitment
- Knowledge of skills and local recruitment
- Links to local colleges and universities

Looking forward

- We take an account management approach to support businesses



✉ invest@semlep.com

☎ 01234 436100

💻 semlep.com

SEMLEP
South East Midlands
Local Enterprise Partnership

📍 Innovation Centre
Cranfield University Technology Park
University Way
Cranfield
Bedfordshire
MK43 0BT



Local Authorities

The South East Midlands is formed of six Local Authorities. Each Local Authority can offer region specific information, advice and guidance on services, economic development, housing and schools.



North Northamptonshire Council: www.northnorthants.gov.uk



West Northamptonshire Council: www.westnorthants.gov.uk



Milton Keynes Council: www.milton-keynes.gov.uk



Bedford Borough Council: www.bedford.gov.uk



Central Bedfordshire Council: www.centralbedfordshire.gov.uk



Luton Borough Council: www.luton.gov.uk